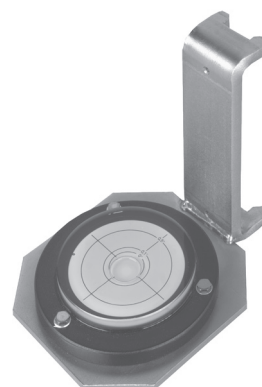


## Type 55-01-07A Rocker System

25 t ... 90 t



Rocker System 55-01-07A with RC1 Load Cell



Flintec Bubble Level

### Product Description

Flintec load cell supports are designed to prevent unwanted forces from affecting load cell performance.

The type 55-01-07A is a self aligning rocker system, combining excellent load introduction with low profile design.

Especially designed for the RC1 load cells.

Material: steel, zinc plated.

A mounting fixture is available for easy and accurate positioning of foundation plates.

The unique Flintec bubble level is available for accurate vertical alignment of the load cell.

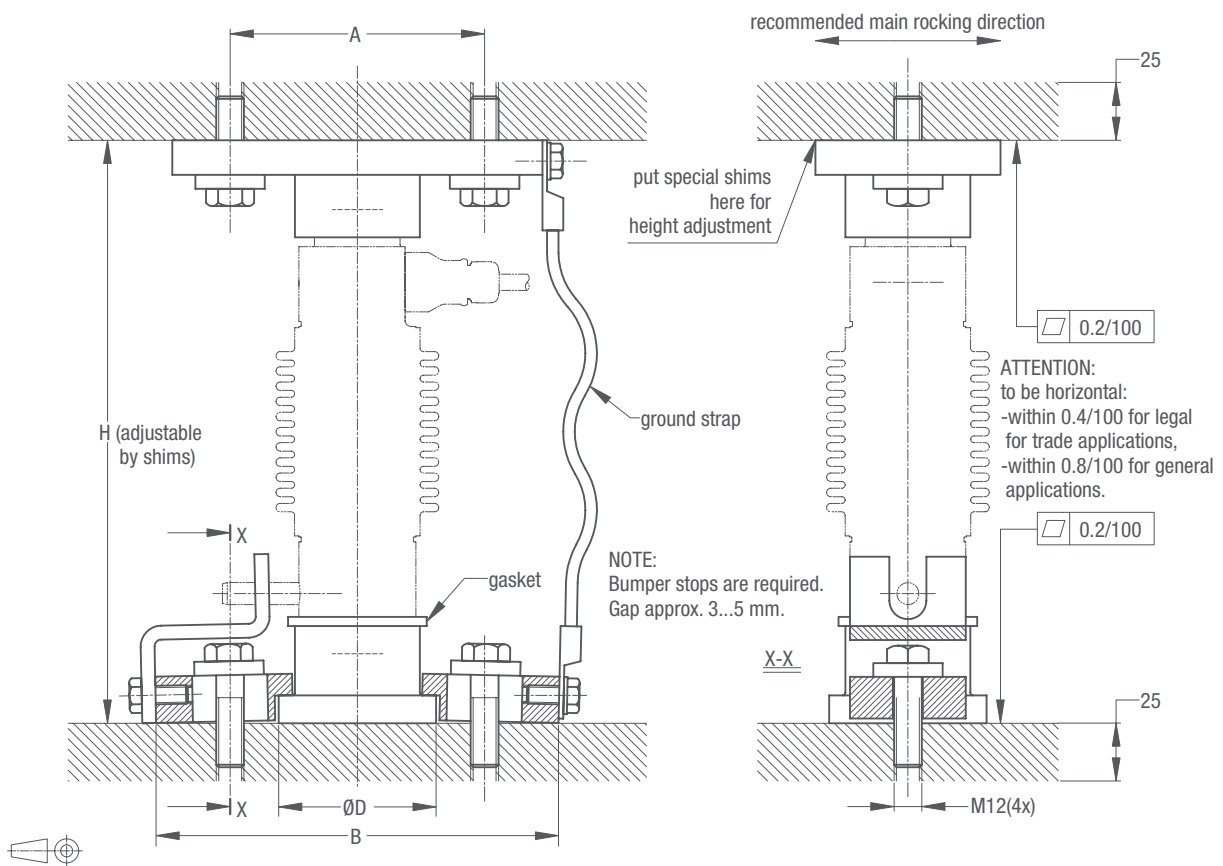
### Key Features

- Capacities 25 t, 40 t, 60 t and 90 t
- Low cost
- Very easy to install
- Especially designed for weighbridges
- W&M certified

### Available Accessories

- Mounting fixture
- Bubble level
- Welding plate

### 55-01-07A Dimensions (in mm)



Load cell type	A	B	D	H
RC1-250 kN	110	176	68	252
RC1-400 kN	110	176	68	285
RC1-600 kN	130	196	88	300
RC1-900 kN	130	196	88	300

Assembly drawings with installation instructions and CAD files for customer's own applications drawings are available on request.

### Accessories

