

Type 52-10 Height Adjustable Rubber Foot

20 kg ... 2.5 t



Height adjustable rubber foot 52-10 and SB4 load cell

Product Description

Flintec load cell supports are designed to prevent unwanted forces from affecting load cell performance.

The type 52-10 is an height adjustable, self aligning rubber foot; combining excellent load introduction with low profile design. Height adjustable by rotation of the foot.

Especially designed for the SB4, SB5, SB6, SB14 and SLB load cells.

Material: steel, zinc plated; alternatively stainless steel.

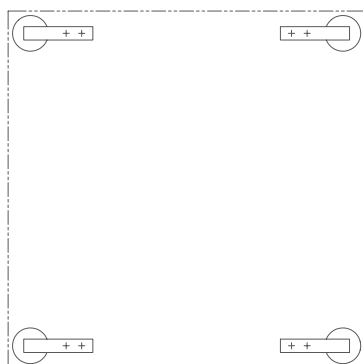
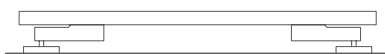
Key Features

- Blind hole load introduction
- Capacity range: 20 kg to 2500 kg
- Low profile
- Height adjustable by rotation
- Very easy to install
- Especially designed for platform scales
- W&M certified

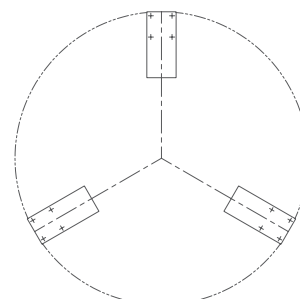
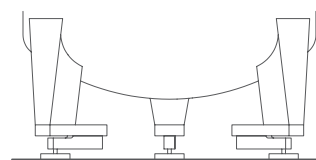
Available Accessory

- Fixation plate

Examples

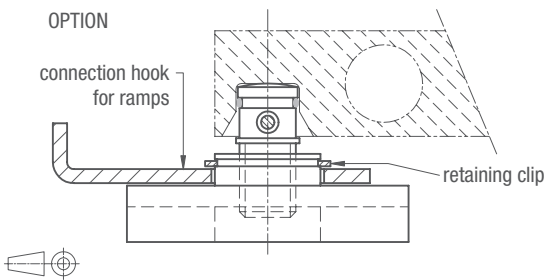
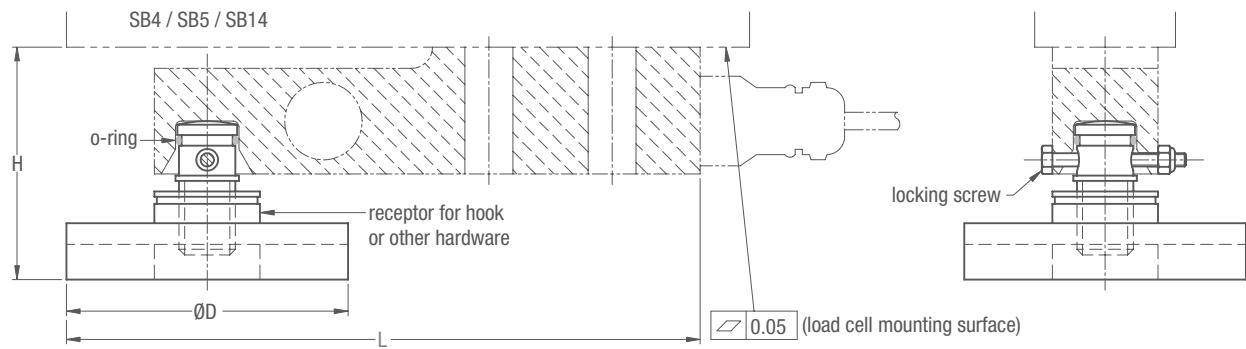


Platform scale with 4 load cells



Tank weighing system with 3 load cells
(recommended base plate 52-00 included)

52-10 Dimensions (in mm)

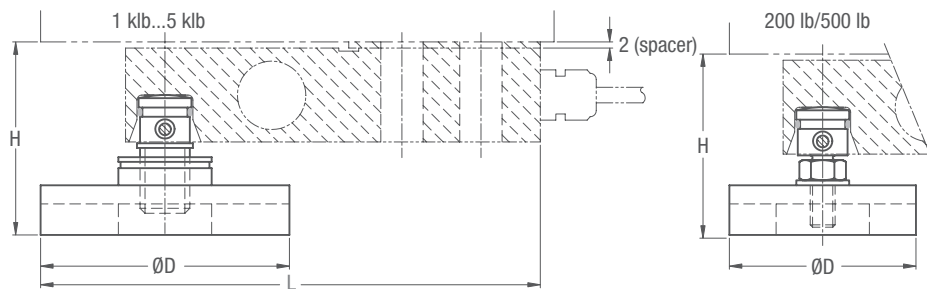


Load Cell Type	Capacity in kg	L	H	D
SB4/SB5-5 kN/10 kN/20 kN	510/1020/2039	180	63...71	80
SB6-200 N/500 N/1 kN/2 kN	20.4/51/102/204	150	65...71*	60
SB14-500 lb/1 klb	227/454	164	58...66	80
SB14-2.5 klb/5 klb	1134/2268	164	60...68*	80
SLB-200 lb/500 lb	91/227	154	57...63*	60
SLB-1 klb/2.5 klb/5 klb	454/1134/2268	164	59...67*	80

* Including spacer.

CAD files for customer's own applications drawings are available on request.

Details Type SLB Load Cell



Details Type SB6 Load cell

